



PRAKASH

Worldwide

Quality, Reliability, Life



End Suction Centrifugal Pump



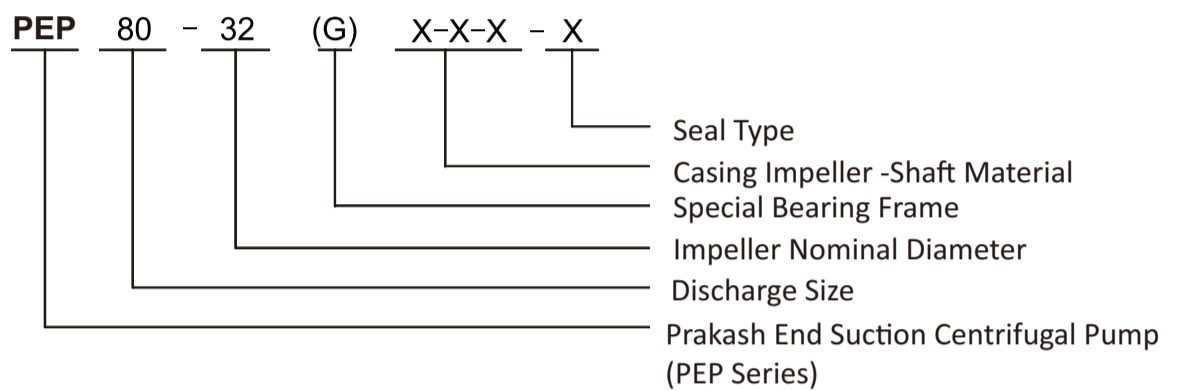
End Suction Centrifugal Pump



Description & Features

Prakash End Suction Centrifugal Pumps (PEP Series) are designed complying to BS En733 / DIN24255 standard. This series of pumps have great advantages in interchangeable parts, high quality and low cost, wide applications in plants, mines, city water supplies, fire-fighting system, air-condition system and irrigation.

Model Instruction



Material Code

C: Cast Iron
 Q: Ductile Iron
 B: Brass
 S: ASTM 420
 45: ASTM 1045
 S304: ASTM 304
 S316: ASTM 316

- Bearing Frame Code
 - H: Bearing frame for double-row bearing
 - G: Bigger shaft and bearing frame
 - Default: Standard
- Seal Type
 - M: Mechanical Seal
 - P: Gland Packing

Design & Structure

Design	Performance and dimensions referring to the European standard BS EN733 / DIN24255
Structure	Horizontal, Axial End-Suction, Single-Stage, Single-Suction, Volute Casing, Back pull-out
DN (mm)	32~300
Flange	DIN2501 PN16 GB / T17241.6 PN1.6

Applications

- Water supply and drainage
- HVAC and Cooling Tower
- Marine – Ballasting & Bilge
- Booster and Pressurization Set
- Irrigation and agriculture
- Water supply and drainage
- Food and chemical industry (with stainless steel material)

Material

Part	Standard Material	Options on request
Casing	Cast Iron	Ductile Iron / ASTM304 / ASTM316
Impeller	Cast Iron	Brass / ASTM304 / ASTM316
Shaft	ASTM420	ASTM304 / ASTM316 / ASTM1045
Shaft Seal	Mechanical Seal	Gland Packing

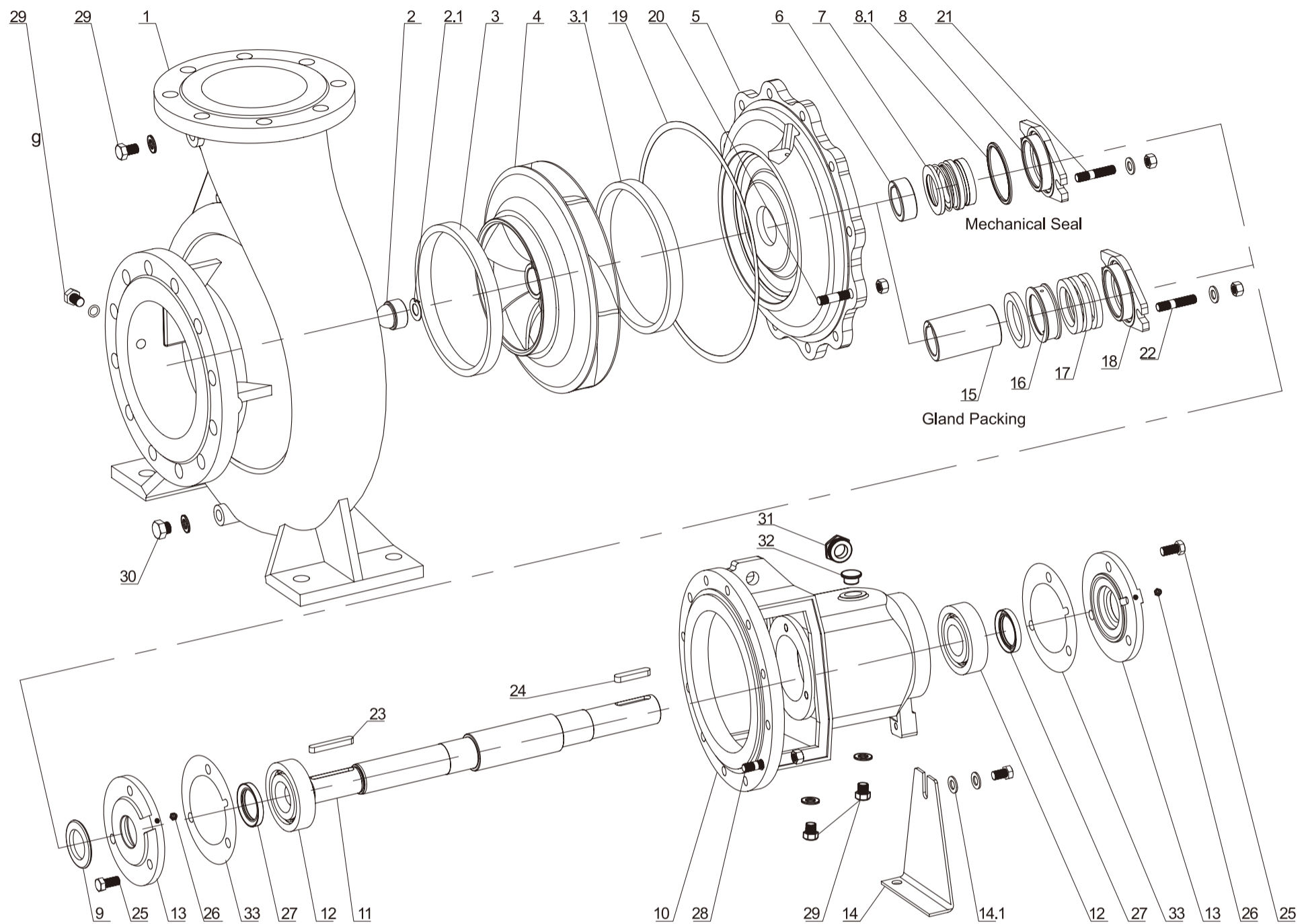
Operating Data

Flow Rate(Q)	4~1584 m ³ /h
Head(H)	2~150 m
Speed	1450 or 2900 rpm (50Hz) / 1750 or 3500 rpm (60Hz)
Max Temperature	85°C(standard) ; 105°C(on request)
Working Pressure	1.0 MPa standard ; 1.6 MPa on request
Conveying Medium	Clean water or liquids similar to clean water in physical property

End Suction Centrifugal Pump



PEP series Explode view & List of Parts



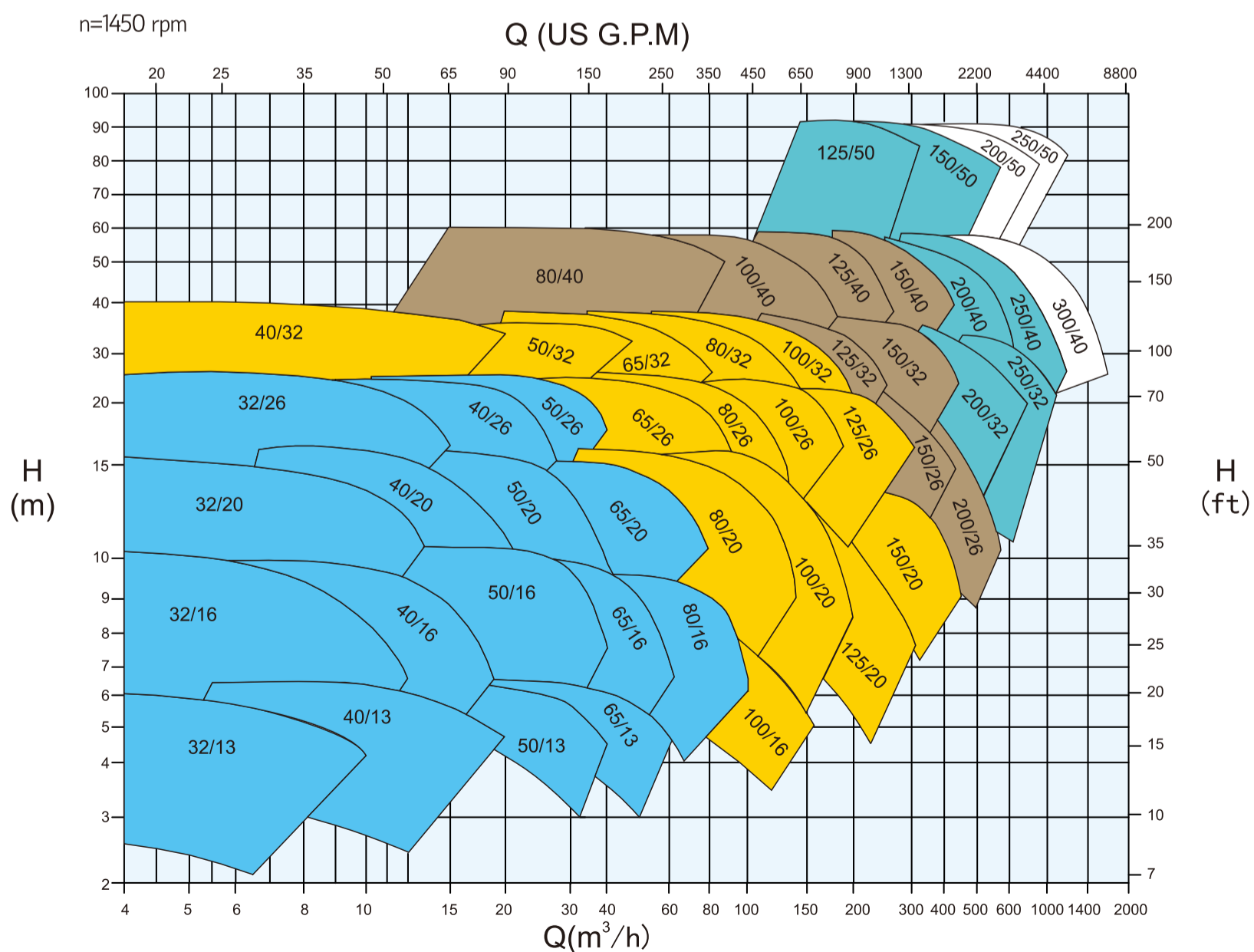
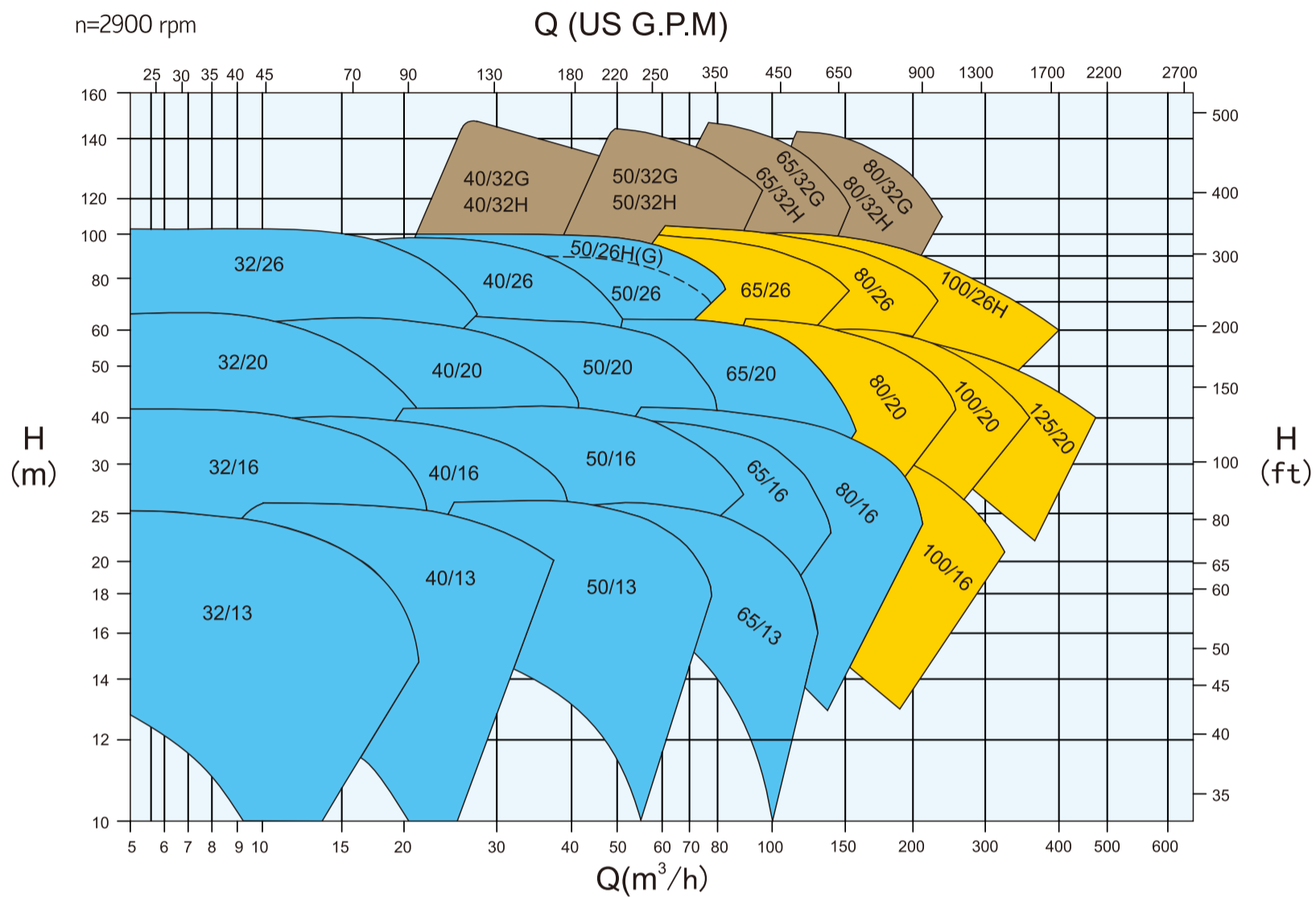
Code	Part Name
1	Casing
2	Impeller Nut
2.1	Lock Washer
3	Wear Ring (Front)
3.1	Wear Ring (Back)
4	Impeller
5	Casing Cover
6	Shaft Spacer
7	Mech.Seal
8	Seal Cover
8.1	O-ring
9	Rubber Slinger
10	Bearing Frame

Code	Part Name
11	Shaft
12	Bearing
13	Bearing Cover
14	Support Foot
14.1	Flat Washer
15	Packing Sleeve
16	Packing Seal Cage
	Throat Bushing
17	Gland Packing
18	Gland Cover
19	Casing Gasket
20	Stud Bolt
21	Stud Bolt

Code	Part Name
22	Stud Bolt
23	Key
24	Key
25	Screw Bolt
26	Oil Cup
27	Felting
	Oil Seal
28	Stud Bolt
29	Plug
30	Plug
31	Oil Scale
32	Oil Cover
33	Throat Bushing Gasket

End Suction Centrifugal Pump

PEP Series-50Hz Performance

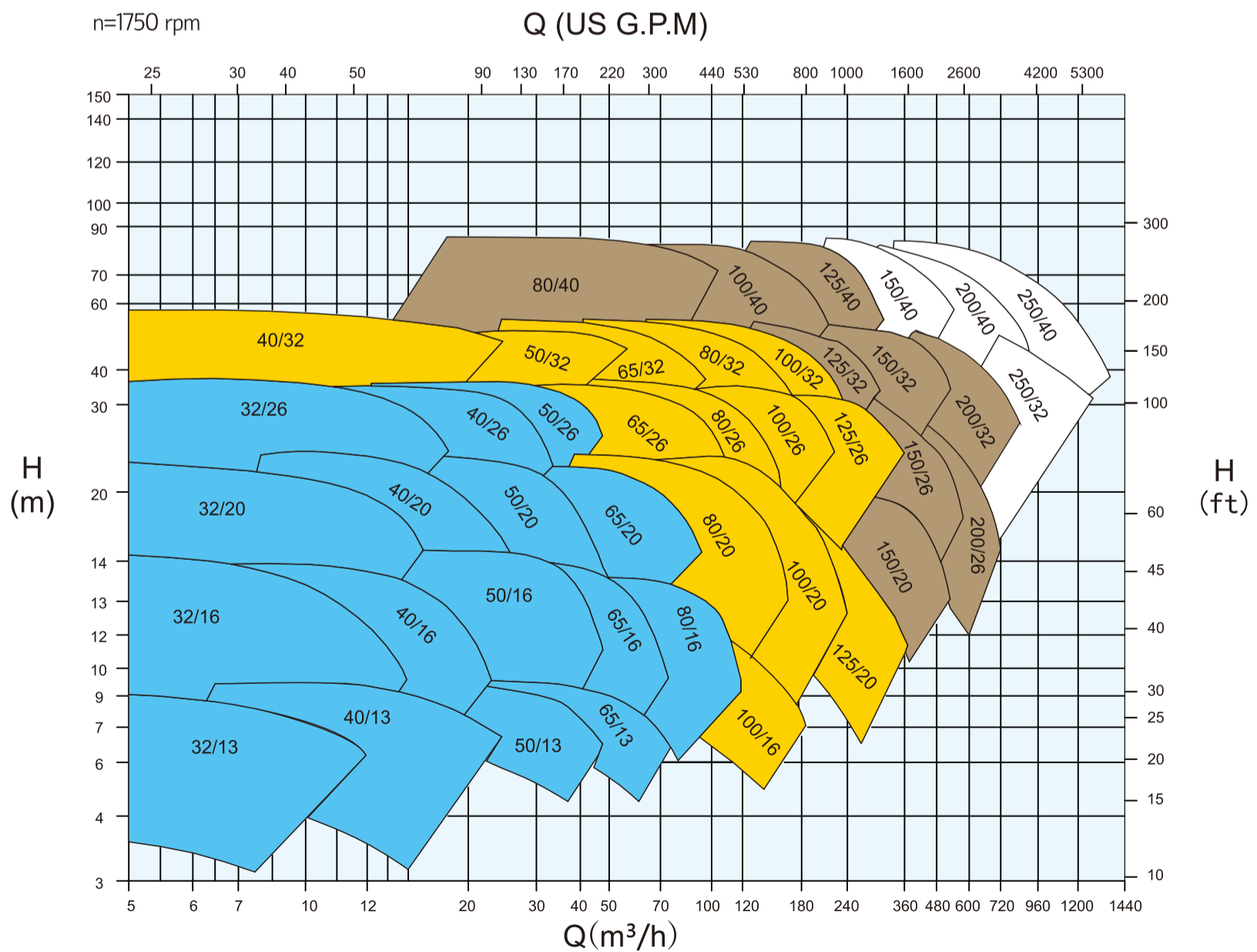
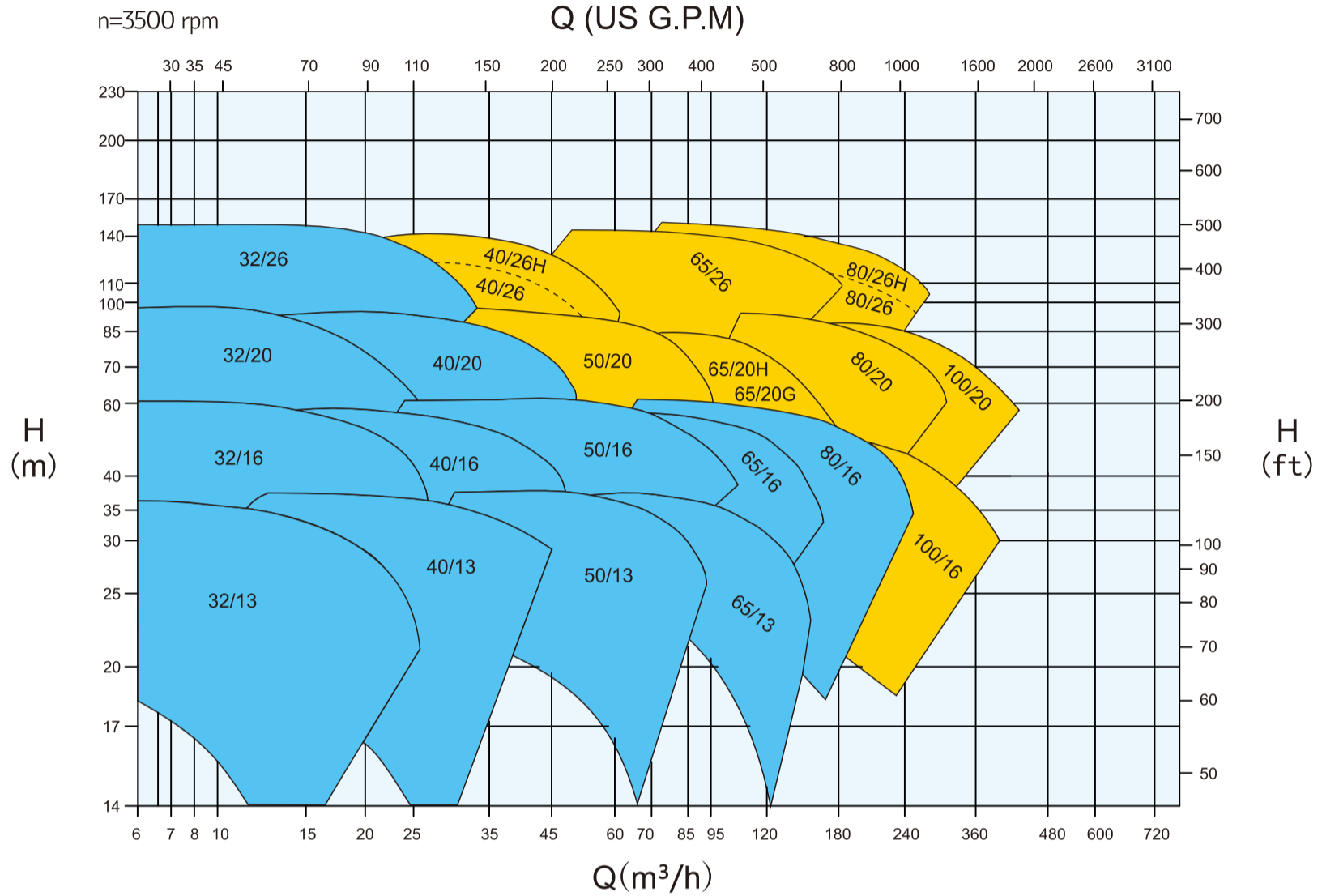


Performance to ISO9906 Grade 2 for clean cold water only

End Suction Centrifugal Pump

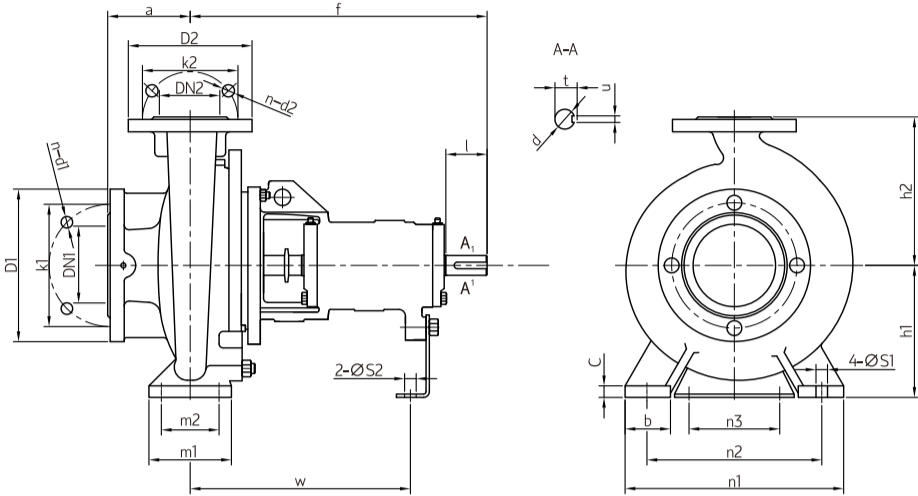


PEP Series-60Hz Performance



Performance to ISO9906 Grade 2 for clean cold water only

End Suction Centrifugal Pump



Flange Dimensions (ISO7005.2 DIN2501 PN16 GB/T17241.6 PN1.6)

DN1/DN2	32	40	50	65	80	100
D1/D2	140	150	165	185	200	220
K1/K2	100	110	125	145	160	180
n-d1/ n-d2	4-Φ18	4-Φ18	4-Φ18	4-Φ18	8-Φ18	8-Φ18

DN1/DN2	125	150	200	250	300	350
D1/D2	250	285	340	405	460	520
K1/K2	210	240	295	355	410	470
n-d1/ n-d2	8-Φ 18	8-Φ 22	12-Φ 22	12-Φ 26	12-Φ 26	16-Φ 26

Model	Bearing Inner Dia.	DN2	DN1	a	f	h1	h2	b	c	n3	m1	m2	n1	n2	S1	S2	w	d	l	t	u	Weight (kg)																			
PEP32/13	25	32	50	80	360	112	140	50	14	100	100	70	190	140	14								29																		
PEP32/16						132	160						240	190									35																		
PEP32/20						160	180						240	190									47																		
PEP32/26						180	225						320	250									58																		
PEP40/13	25	40	80	100	360	112	140	50	14	100	100	70	210	160	14								31																		
PEP40/16						132	160						240	190									34																		
PEP40/20						160	180						265	212									45																		
PEP40/26(H)						180	225						320	250									61																		
PEP40/32	35	65	125	470	526	200	250	65	14	110	125	95	345	280	14								94																		
PEP40/32(H)						200	250						345	280									107																		
PEP40/32G						526	200						250	345									280	105																	
PEP50/13						25	50						100	360									360	132	160	50	14	100	100	70	240	190	14								35
PEP50/16	160	180	265	212	39																																				
PEP50/20	160	200	320	250	49																																				
PEP50/26(H)	180	225	320	250	68																																				
PEP50/26G	35	50	125	470	526	225	280	65	14	110	125	95	345	280	14								65																		
PEP50/32(H)						225	280						345	280									113																		
PEP50/32G						526	225						280	345									280	105																	
PEP65/13						25	65						80	100									360	160	180	65	14	125	95	95	280	212	14								41
PEP65/16	160	200	320	250	47																																				
PEP65/20(H)	180	225	320	250	55																																				
PEP65/20G	465	200	250	360	280			60																																	
PEP65/26	35	80	125	470	526	200	250	80	14	160	120	120	360	280	14								87																		
PEP65/32(H)						225	280						400	315									110																		
PEP65/32G						525	225						280	400									315	110																	
PEP80/16						25	80						100	360									360	180	225	65	14	125	95	95	320	250	14								53
PEP80/20	180	250	345	280	76																																				
PEP80/26	180	250	345	280	76																																				
PEP80/32(H)	470	200	280	400	315			95																																	
PEP80/32G	35	100	125	526	530	250	315	80	14	110	160	120	400	315	14								118																		
PEP80/40						530	280						355	83									18	160	120	440	340	130													
PEP100/16						35	100						125	470									470	200	280	80	16	160	120	120	360	280	18								87
PEP100/20																								200	280						400	315									84
PEP100/26(H)	225	280	400	315	102																																				
PEP100/32	250	315	400	315	118																																				
PEP100/40	45	150	200	530	530	280	355	100	20	200	150	150	500	400	23								176																		
PEP125/20						250	315						400	315									112																		
PEP125/26						250	355						400	315									117																		
PEP125/32						280	355						400	315									155																		
PEP125/40	45	125	150	530	530	315	400	100	18	200	150	150	500	400	23								178																		
PEP125/50						670	355						450	550									450	300																	
PEP150/20						500	280						400	400									315	132																	
PEP150/26						250	355						400	450									350	163																	
PEP150/32	45	150	200	530	530	280	400	100	18	200	150	150	450	350	23								170																		
PEP150/40						315	450						550	450									207																		
PEP150/50						670	375						500	500									48	330																	
PEP200/26						555	315						450	392									42	219																	
PEP200/32	55	200	250	670	670	315	480	120	20	220	170	170	600	480	28								286																		
PEP200/40						335	480						505	48									328																		
PEP200/50						65	200						250	200									720	425	560	100	22	140	200	150	660	560	23	19	515	60	140	64	18	450	
PEP250/32						691	355						520	525									48	366																	
PEP250/40	682	400	560	516	48	396																																			
PEP250/50	65	250	300	250	720	450	670	120	32	140	240	190	750	650	23	19	515	60	140	64	18	550																			
PEP300/40	65	300	350	300	720	425	670	120	30	140	250	190	760	660	30	19	515	60	140	64	18	550																			

For Installation dimensions and technical details please contact our service team.



PRAKASH

Worldwide



Scan QR Code to Get
Quotation by Email



Scan QR Code to Get
Quotation by SMS



Scan QR Code to
Download e-Catalogue



Prakash Pump

Naroda Road, Ahmedabad-380025. Gujarat, India

Phone : +919925249371 | Email:info@prakashpump.com | www.prakashpump.com

UAE : 00971 50 6731283 | 00971 37222733

Oman : 00968 95690021 | 00968 26883982