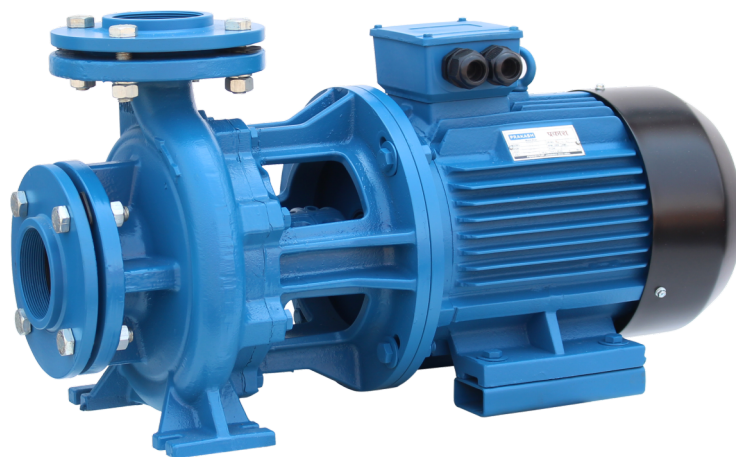




Quality, Reliability, Life

# Solo Industrial pump



[www.prakashpump.com](http://www.prakashpump.com)

## Applications

- Civil
- Agricultural
- Industrial or General Plant use.
- Water Supply
- Spray or flowing irrigation
- Autoclave feed
- High pressure system
- Heating
- Conditioning and any other general service requiring transfer of clean liquids.

## Performance Range

- Flow: Up to 1500 LPM
- Head: Up to 88m
- Speed 2900 RPM
- Power 2.2Kw – 22Kw.

## Application Limits

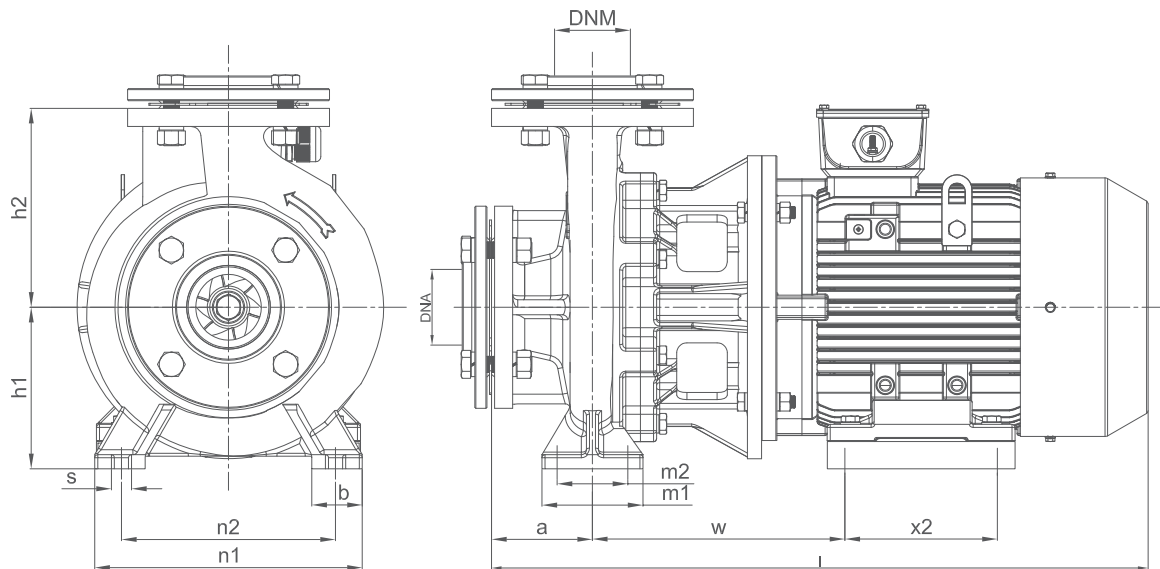
- Manometric Suction Lift Up to 8m
- Liquid Temperature between 10°C to 105°C
- Ambient Temperature Up to 40°C
- Max. Working Pressure 10 Bar
- 50 Hz

## Motor Details

- 2 Pole induction motor
- Insulation Class-F
- Protection-44
- Continuous duty : S1

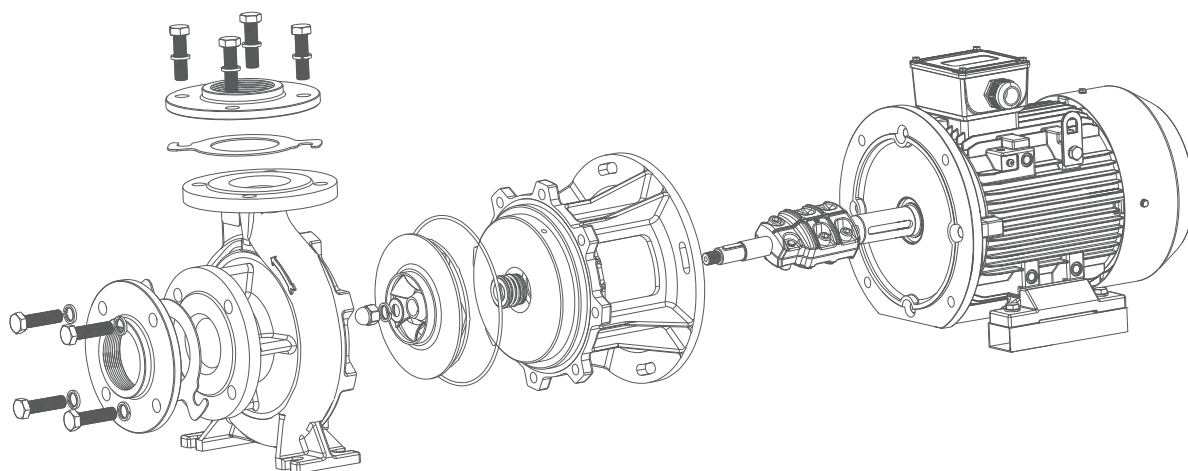
## Installation and Use

These pumps are ideal for pumping clean water and other chemically and mechanically non-aggressive liquids. These system can be installed in any position, provide the inlet opening faces upwards, and, thanks to their Special design-which allows back pull out of the motor and the rotary parts Of the pump and subsequent re-assembly without having to remove the pump Body and the pipes connected to it – can be easily and conveniently used for a wide variety of applications in civil, agricultural, industrial or general plant uses. Water supply, spray or flowing irrigation, autoclave feed, high pressure system heating, conditioning and any other service requiring transfer of clean liquids



Model	Ports		Dimensions In MM											
	DNA	DNM	1	a	m1	m2	n1	n2	h1	h2	S	b	W	x2
PSPP-3	3"/2.5"	3"/2"	405	80	80		240	190	120	165	11	50	-	-
PSPP-5.5	3"/2.5"	3"/2"	539	80	100	70	240	190	132	160	14	50	276	170
PSPP-7.5	3"/2.5"	3"/2"	582	100	100	70	265	212	160	200	14	50	295	140
PSPP-10	3"/2.5"	3"/2"	582	100	100	70	265	212	160	200	14	50	295	140
PSPP-15	3"/2.5"	3"/2"	711	100	100	70	265	212	160	200	14	50	314	210
PSPP-20	3"/2.5"	3"/2"	711	100	100	70	265	212	160	200	14	50	314	210
PSPP-25	3"	3"	797	100	125	95	320	250	180	225	14	65	355	254
PSPP-30	3"	3"	824	100	125	95	320	250	180	225	14	65	368	241

## Exploded View



## Material of the Components in Contact with the Liquid

Components		Pump Body (Volute Chamber)	Impeller	Muff coupling with shaft	Mechanical Seal	O'Ring	Pump Bracket
Material	Standard	Cast Iron	Stainless Steel 410	Stainless Steel 410 & S.G. Iron	Mg1-SiC Standard Mechanical Seal	High Nitrile Rubber	Combine Cast Iron
	Special Requirement	Stainless Steel +304/316	Stainless Steel 304/316	Stainless Steel 304/316 & S.G. Iron	Mg1-SiC/TC Viton Mechanical Seal		

## Pump Selection Chart

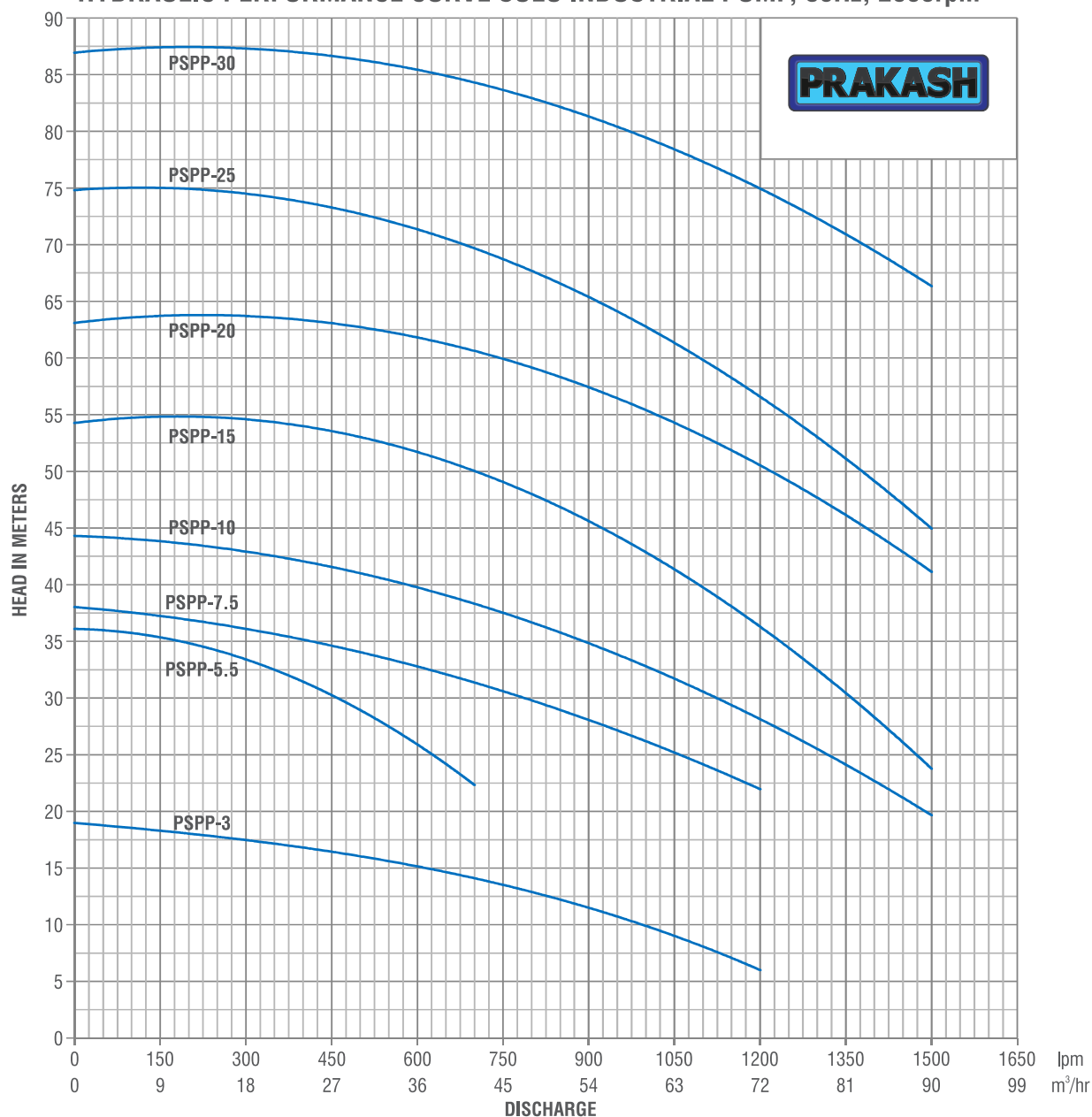
Model	Power		Phase	Inlet Outlet	Max. Flow (lpm)	Max. Head (m)	Max. Suction (m)
	KW	HP					
PSPP-3	2.2	3	3	2.5" X 2" & 3" X 3"	1200	19	8
PSPP-5.5	4	5.5			700	36	
PSPP-7.5	5.5	7.5			1200	38	
PSPP-10	7.5	10			1500	45	
PSPP-15	11	15			1500	55	
PSPP-20	15	20			1500	65	
PSPP-25	18.5	25		3" X 3"	1500	75	
PSPP-30	22	30			1500	88	

## Hydraulic performance chart

			US GPM	0	26	53	79	106	132	159	185	211	238	264	291	317	
Model	Power		Q	M <sup>3</sup> /H	0	6	12	18	24	30	36	42	48	54	60	66	72
	KW	HP		LPM	0	100	200	300	400	500	600	700	800	900	1000	1100	1200
PSPP-3	2.2	3.0	H meters		19	18,5	18	17,5	17	16	15	14	13	11,5	10	8	6

			US GPM	0	26	40	53	66	79	90	106	119	132	159	185	211	238	264	317	370	396	
MODEL	POWER		Q	M³/H	0	6	9	12	15	18	21	24	27	30	36	42	48	54	60	72	84	90
	KW	HP		LPM	0	100	150	200	250	300	350	400	450	500	600	700	800	900	1000	1200	1400	1500
PSPP-5.5	4.0	5.5	H Meters		36	35.5	35.5	35	34.5	33.5	32.5	31.5	30	28.5	26	22.5						
PSPP-7.5	5.5	7.5			38	37.5	37.5	37	36.5	36	35.5	35	34.5	34	33	31.5	30	28	26	22		
PSPP-10	7.5	10.0			45	44.5	44	43.5	43	42.5	42	41.5	41	40.5	39.5	38.5	37.5	36	34	27	22	20
PSPP-15	11.0	15.0			55	54.5	54.5	54.5	54.5	54.5	54	53.5	53	52	50	48	46	43	36	28	24	
PSPP-20	15.0	20.0			65	64.5	64	63.5	63	62.5	62	62	62	62	62	61	58.5	56	50	45	40	
PSPP-25	18.5	25.0			75	75	75	74.5	74.5	74.5	74.5	74	73	72	71.5	71	69	65	61.5	55.5	50	45
PSPP-30	22.0	30.0			88	88	88	87.5	87	86.5	86.5	86	86	85	85	85	84.5	82.5	80	75	70	65

## HYDRAULIC PERFORMANCE CURVE SOLO INDUSTRIAL PUMP, 50Hz, 2900rpm





Quality, Reliability, Life

**PRAKASH PUMP**

Survey No. 479, Opp. Supreme Estate-1,  
Zak Kadadara Road, Vill.- Kadadara,  
Tal.- Dehgam, Gandhinagar,  
Gujarat 382305 INDIA

**Distributor Office for Middle East**

**PRAKASH PUMP EST**

P.O.Box: 20973 Industrial Area  
AL Ain, (United Arab Emirates)  
T: +971 3 7222733  
F: +971 3 7222744  
M: +971 50 6731283  
E-mail: sale@prakashpump.com

**Distributor Office for Oman**

**Global Equipment Material Co. LLC**

P.O. Box. 227, Postal Code:320  
Nakhla Road, Barka(Sultanate of Oman)  
T: +968 26883982  
F: +968 26883982  
M: +968 94584686  
E-mail: oman@prakashpump.com



To get  
quotation by email



To get  
quotation by SMS



To  
download e-catalogue



PRAKASHPUMPEST



PRAKASHPUMPEST



PRAKASHPUMPEST



PRAKASHPUMPOFFICIAL

The images given is only for illustration purpose for further details contact to sales team or sale@prakashpump.com / oman@prakashpump.com